











The Normal Distribution

Most data tends to follow the normal distribution or bell shaped curve.

One of the key properties of the normal distribution is the relationship between the shape of the curve and the standard deviation.





The Normal Distribution

Most observations in nature follow the normal distribution as they are the result of many small independent effects.

The total effect is the sum of the individual effects, and the central limit theorem states that the distribution of the sum of many independent effects is approximately normal.











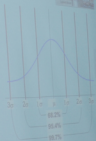




The Normal Distribution

Most data tends to follow the normal distribution or bell shaped curve

One of the key properties of the normal distribution is the relationship between the shape of the curve and the standard deviation



By Dr. M. S. S. S. S. S.

The Normal Distribution

Most data tends to follow the normal distribution or bell shaped curve

One of the key properties of the normal distribution is the relationship between the shape of the curve and the standard deviation















